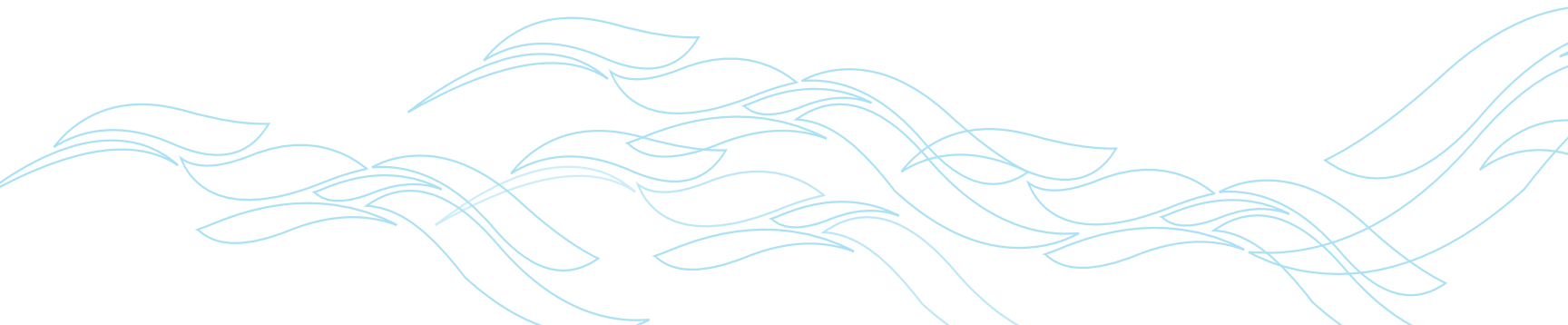




Island Experts



SSFM International Inc.
is a design and project management firm.
Our practice is far reaching but
we always draw from our island roots.
We were founded in the Hawaiian Islands
and practice throughout the Asia-Pacific region.

On The Cover

The sunset view from KoKo Head towards Hanauma Bay and Honolulu illuminates the essence of our island homes and our professional world - the built and natural environments where land and oceans meet.



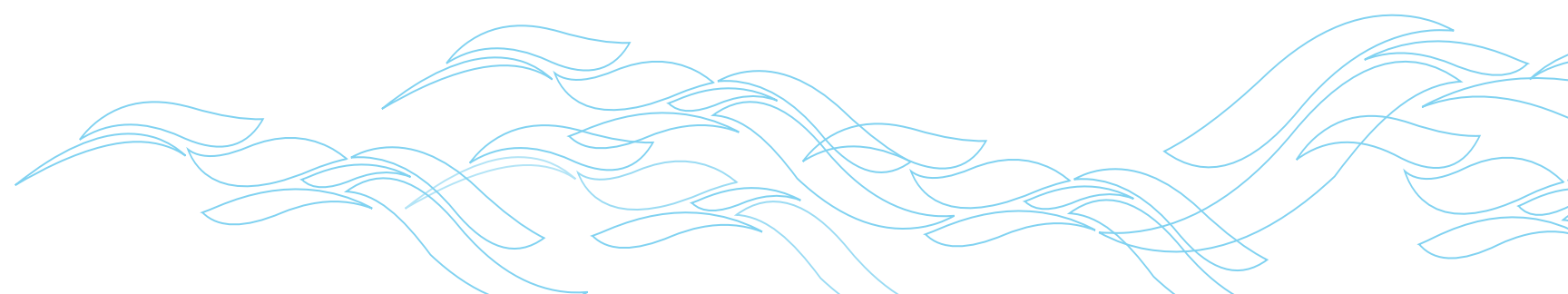
Our professional disciplines include planning, project and construction management, civil, structural, and traffic engineering, and real estate advisory services. We steward complex projects from initial plans through construction.



Interstate Route H-1 Corridor
Major planning study.
Island of Oahu, Hawaii

Accomplishments that span over half a century mean we know the islands. We know the people, the places, the customs and the challenges of bringing projects to life here.

We are Island Experts.





Kauai

Kauai's economy is based almost entirely on tourism and agriculture. Projects on Kauai have a tremendous commitment to the environment. Our established relationships with local jurisdictions allow us to be an integral part of helping to shape the future.

Oahu

Oahu and Honolulu have been our corporate home since our founding in 1959. Oahu's diverse economy has offered an amazing platform for our growth and success. Our connections to the people and places make Oahu a significant part of the firm's legacy.

Maui

Maui's popularity has brought exceptional growth. Reaction to development means executing projects is more difficult, with entitlements and permitting especially challenging. Our Maui location means we can help clients find ways to make their projects successful.

The Big Island

The Big Island is the most changeable of Hawaii's environments with the on-going seismic activity of five volcanos. Their influence on the Island's physical makeup, infrastructure needs and governmental practices have defined the services SSFM provides, including Disaster Response Assistance.

Island Ethic

THE GEOGRAPHIC MAKEUP OF HAWAII CREATES A DISTINCTIVE PLACE TO DO BUSINESS. OUR OCEAN CHANNELS MEAN THAT EACH OF THE ISLANDS IS AN ENVIRONMENT WITH SPECIAL NEEDS, BEHAVIOR, POLITICS AND OTHER TRAITS THAT DRIVE BUSINESS ACTIVITIES.

To best serve our clients we have offices on each of the islands. Our people are part of the community, connected to the local issues, challenges, idiosyncrasies and opportunities. SSFM is invested in making our islands better places.



Guam

The Guam office offers engineering design and construction management services for the Guam government, US military and commercial developers.

Beyond Hawaii

Growing up in Hawaii has shaped the way we practice. We are a part of the communities where we work. Being local serves our clients well and means projects always go better. It is the model we have embraced for our domestic offices and have successfully extended to locations throughout the Asia-Pacific region.



Okinawa

Providing services for U.S. military bases is the focus of the SSFM Okinawa office. We offer locally based resources supported by the full capabilities of the firm.



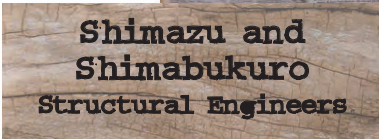
Manila

Our technical and production center in Manila employs highly qualified engineering talent to support all SSFM offices.



Home Grown

HAWAII CELEBRATED ITS STATEHOOD IN AUGUST 1959. THAT SAME MONTH AND YEAR DON SHIMAZU AND ROY SHIMABUKURO FOUNDED THE STRUCTURAL ENGINEERING PRACTICE THAT IS TODAY SSFM INTERNATIONAL INC. STATEHOOD WAS THE BEDROCK OF THE FIRM'S SUCCESS. THE PENT-UP DEMAND FOR ACCESS TO THE ISLANDS BROUGHT AMAZING OPPORTUNITIES FOR OUR NEW FIRM THAT HAVE CONTINUED UNABATED FOR OVER FIVE DECADES.



SSFM

With statehood, **Hawaii** was poised for tremendous growth. Through the past five decades SSFM's evolution has paralleled Hawaii's. We've been both witnesses to, and participants in shaping our amazing Hawaiian home.



1961
The firm becomes **Shimazu, Matsuda & Shimabukuro** upon merging with Fujio Matsuda's practice.



1968
First **McDonald's** opens.



1976
Maui surpasses one-million visitors.



1960s
SSFM is structural engineer for new **Honolulu Airport** concourse.



1975
7.2 magnitude earthquake hits the Big Island.

1960
Tourism overtakes sugar and pineapples as the Islands' top industry.



1966
Aloha Fridays employees can wear Aloha shirts.



1962
USS Arizona Memorial opens.



1968
Michael Matsumoto joins the firm after receiving his Masters of Science degree in Structural Engineering from the University of Illinois.



1976
SSFM receives the **Grand Conceptor Award** from the Consulting Engineers Council for the **Keahi Interchange** viaduct and frontage road structures.



“WHEN I JOINED THE FIRM IN 1968, ITS DISTINCT CULTURE WAS ALREADY SET. A SERVICE ETHIC SECOND TO NONE, EXCEPTIONAL PROFESSIONAL CAPABILITIES, A POWERFUL WORK ETHIC, AND AN INORDINATE COMMITMENT TO THE COMMUNITIES WHERE WE WORK WERE ALL KEYS TO OUR FUTURE SUCCESS.”

MICHAEL P. MATSUMOTO
PRESIDENT/CEO, SSFM INTERNATIONAL

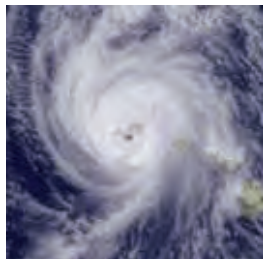


1987
New office located adjacent to the Dole pineapple processing plant.



1980s
SSFM is the PM, CM and Engineer of Record at **Aloha Stadium**.

Average Oahu single-family home costs **\$150,000**.



1992
Hurricane Iniki causes \$1.8 billion in damages. SSFM offers disaster assistance services.

2000

The firm adopts **International** as a part of its name to reflect its global reach.



2000
SSFM adds **Traffic Engineering** services.



1990s
SSFM is structural engineer for **Maui Four Seasons Wailea**.



1999
Addition of the **Planning Group, Maui, Kauai** and the **Big Island** offices open.



2014
Kapolei office opens.



2002
Planning and design of the **Pearl Harbor Magnetic Silencing Facility** concrete slip.

2003
SSFM moves to its **new headquarters**.



2012
Architectural and engineering design of the elephant exhibit at the **Honolulu Zoo**.



2015
SSFM selected as the **NAIOP Engineering Firm of the Year** for its commitment and extensive contributions to shaping the face of Hawaii's real estate for over 5 decades.



2016
Honolulu Complete Streets Design Manual of SSFM selected as the **APA Transportation Planning Award**.

How We Help

SSFM'S PRACTICE COMBINES TECHNICAL KNOWLEDGE AND INNOVATION WITH COMMITTED PROGRAM MANAGERS. WE PROVIDE SOLUTIONS THAT INCLUDE PLANNING, PROJECT MANAGEMENT, CONSTRUCTION MANAGEMENT, CIVIL ENGINEERING, STRUCTURAL ENGINEERING, TRAFFIC ENGINEERING AND ADVISORY SERVICES.

Project Management

Project Management is the cornerstone of bringing our clients' assignments to successful fruition. SSFM's methodology is comprehensive, and our extensive professional capabilities, resources and geographic reach mean we can assume responsibility for virtually any project.



Project Management is more than a primary core competency of SSFM. It is the critical component by which we ensure success. We know that we are judged on our overall performance through management, quality, real-time responsiveness and cost controls. Bottom line, we recognize the simple reality that SSFM is successful only when our clients' projects are successful.

Construction Management

Knowing the distinct requirements for constructing projects on each island is key to SSFM's ability to achieve client expectations. Our local presence and established networks have resulted in our record of managing all types of infrastructure and facility construction.



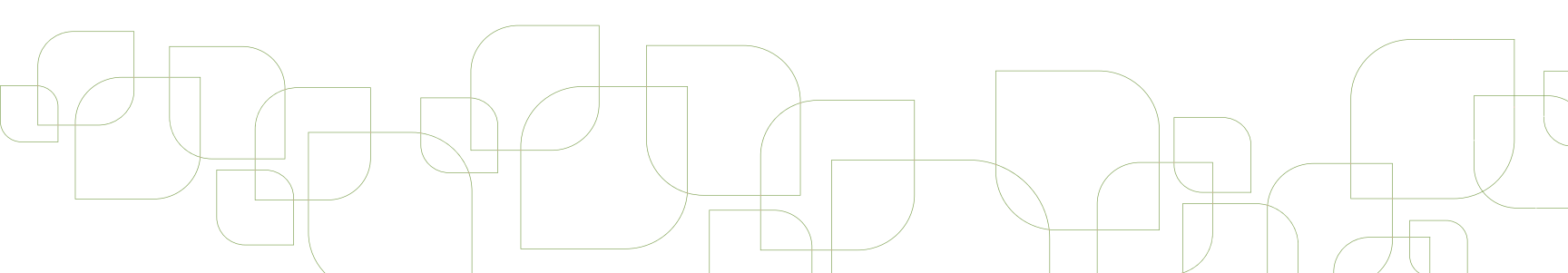
We provide the leadership and experience to monitor, review and manage the many disciplines required for any project. From program review and feasibility analysis through post construction close-out, we offer comprehensive technical and oversight services for projects of all scales and complexity.

Planning

Our planning focused projects result in long-range strategic guidance that provide the framework for orderly development. We've demonstrated our ability to anticipate future needs. Our planners help clients create visions for projects and then guide them through community, environmental and government processes.



We assist clients with meaningful community involvement and participation. We are highly valued for our guidance on how to improve work processes and for assisting agencies with their policy and strategic planning for special programs, especially those that must conform to federal, state and county requirements.



SSFM IS A FIRM WITH CONSIDERABLE RESOURCES. WE DELIVER PROJECTS OF ALL TYPES WITH A COMMON MINDSET, PROVEN PROCESSES AND HONED MANAGEMENT SKILLS.

Traffic Engineering

Our Traffic Engineering Group provides progressive transportation planning and traffic engineering services. The goal for every project is to ensure that transportation networks operate safely and effectively for every mode of travel.



Our participation in projects includes transportation planning, traffic impact analysis reports, traffic engineering studies, traffic operations analysis, traffic signal design, forecast modeling and multi-modal transportation work. SSFM is also a leading force in the Complete Streets initiatives throughout Hawaii.

Structural Engineering

SSFM began in 1959 as a partnership of structural engineers. While our capabilities have expanded with the State's growing infrastructure and development demands, structural engineering remains a core strength.



Our Structural Engineering Group provides the entire spectrum of design services for new construction, renovations, rehabilitations, and repair. We know how to balance economy with innovative design solutions. Our work addresses conceptual design through construction administration. As an indication of the changing times, we provide anti-terrorism force protection engineering to complete building structural envelopes.

Civil Engineering

For over two decades, SSFM's Civil Engineering Group has contributed greatly to the development of the Islands' infrastructure. We work with both public and private sector clients in planning and design of site development, transportation systems and utility infrastructure projects.



We design and document solutions for all types of projects. Our services include grading, drainage and onsite improvement plans, construction details and cost estimates. We embrace Low Impact Development (LID), an approach that protects water quality through land development improvements that integrate with natural systems to manage stormwater runoff close to its source.

Advisory Services

Addressing the many challenges incumbent in the acquisition, development, ownership and disposition of real property is the focus of SSFM's Advisory Group.



Each of Hawaii's Islands presents distinct land use policies, procedures, processes and politics. By aligning our internal expertise with our network of preferred professional partners, we assemble the strategic teams that can resolve almost any real estate need.

Our Universe: People and Places

THE UNIQUENESS OF OUR ISLAND HOMES PERMEATES OUR CULTURE AND IS EMBODIED IN EVERY ASPECT OF HOW WE DO BUSINESS. THE SAME SPIRIT FOSTERS THE SPECIAL BOND BETWEEN OUR PEOPLE, OUR CLIENTS AND OUR COMMUNITIES.

Our Team

We are a multi-disciplinary practice of almost 200 professionals. We hire locally and our people are connected. By being local, projects always go better. We are a true Hawaiian firm.

Our Clients

National, state and local government agencies, allied professionals, developers, owners, and other real estate, facility and property managers, both public and private, comprise our roster of valued clients.

Our Markets

As one of Hawaii's most diverse and comprehensive professional planning, design, engineering and construction management practices, our portfolio includes projects of all types in many different markets. We invite you to learn how SSFM can bring solutions to your next assignment.



Aviation



Buildings



Development



Education



Healthcare



Highways, Roads and Bridges



Site Development & Infrastructure



Water/Wastewater



Waterfront





MAIN OFFICE

501 Sumner Street, Suite 620
Honolulu, Hawaii 96817
P: (808) 531-1308

WWW.SSFM.COM