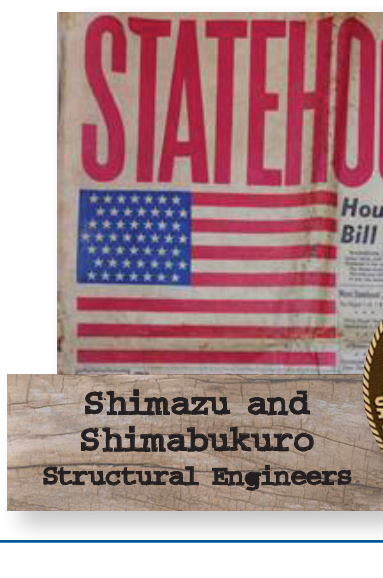


1959



With statehood, **Hawaii** was poised for tremendous growth. Through the past five decades SSFM's evolution has paralleled Hawaii's. We've been both witnesses to, and participants in shaping our amazing Hawaiian home.

1960s

1960

Tourism overtakes sugar and pineapples as the Islands' top industry.

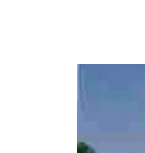
Oahu issues \$164 million in building permits.

1965

600,000 visitors, a new record. Hawaii construction tops **\$300 million**.

1966

Aloha Fridays employees can wear Aloha shirts.



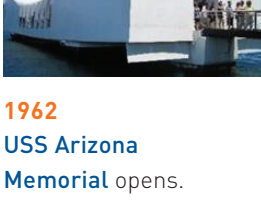
1968

First **McDonalds** opens.



1961

The firm becomes **Shimazu, Matsuda & Shimabukuro** upon merging with Fujio Matsuda's practice.



1962

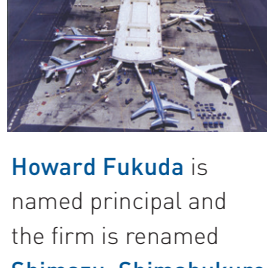
USS Arizona Memorial opens.

1967

Michael Matsumoto joins the firm after receiving his Masters of Engineering degree from the University of Illinois.

1960s

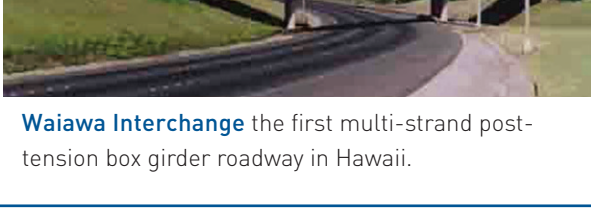
SSFM is structural engineer for new **Honolulu Airport** concourse.



Howard Fukuda is named principal and the firm is renamed **Shimazu, Shimabukuro & Fukuda, Inc.**

Pan Am and **United** start direct Hilo-mainland flights.

Tourist visits hit the **one million mark**.

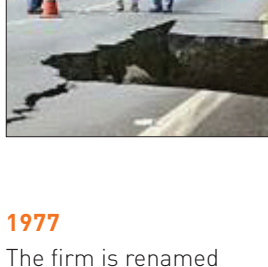


Waiawa Interchange the first multi-strand post-tension box girder roadway in Hawaii.

1970s

1975

7.2 magnitude earthquake on the Big Island.



1977

The firm is renamed **SSFM Engineers, Inc.**

1979

Over **80,000 tourists** visit Hawaii daily.



Structural engineering, planning and design for the **Queen's Medical Center** campus.

1976

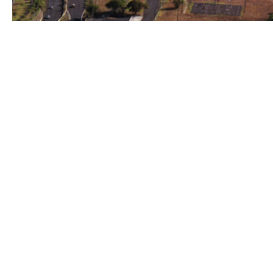
Michael Matsumoto named principal. Firm becomes **Shimazu, Shimabukuro, Fukuda & Matsumoto Inc.**



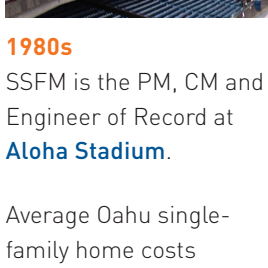
Maui surpasses one-million visitors.

1976

SSFM receives the **Grand Conceptor Award** from the Consulting Engineers Council for the **Keehi Interchange** viaduct and frontage road structures.



1980s



1980s

SSFM is the PM, CM and Engineer of Record at **Aloha Stadium**.

Average Oahu single-family home costs **\$150,000**.

1989

Okinawa Center Structural and civil engineering for reinforced concrete structure



1982

Population of Hawaii reaches **one million**.

United Airlines offers direct flights to Maui.

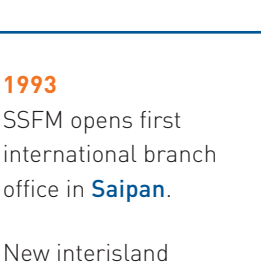
1985

Roy Shimabukuro is named president of SSFM Engineers after Don Shimazu retires.

1986

Over **five million** tourist visits.

Kaiser Clinic Structural engineering for 6 story building & 7 story parking garage.



1987

New office located adjacent to the Dole pineapple processing plant.



1989

Structural engineering services for the **HPower Plant**.



1990s

1992

Hurricane Iniki causes \$1.8 billion in damages. SSFM offers disaster assistance services.



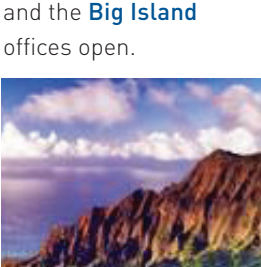
1993

SSFM opens first international branch office in **Saipan**.

New interisland terminal at **Honolulu International**.

1994

Project Management added to the firm's capabilities.



1995

Sugar plantation on the Big Island closes.

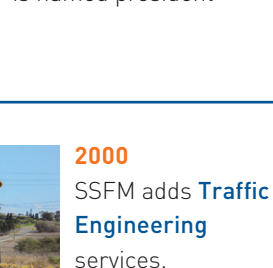


1996

A **new** SSFM logotype.

1997

Project management, structural and civil engineering for the 1 1/2 mile long **IH-3 Halawa Quarry Viaduct**



1990s

SSFM is structural engineer for **Maui Four Seasons Wailea**.



1999

Addition of the **Planning Group**. **Maui, Kauai** and the **Big Island** offices open.



Roy Shimabukuro retires and **Michael Matsumoto** is named president

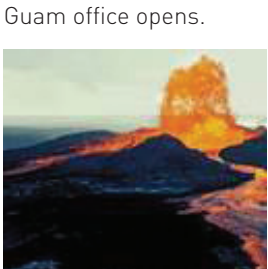
2000s

2000

The firm adopts **International** as a part of its name to reflect its global reach.

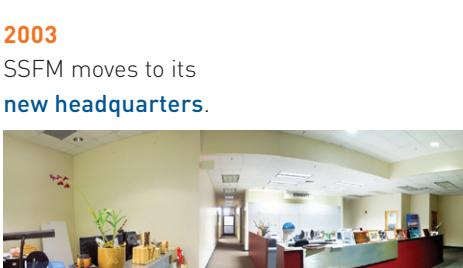


Project management and engineering 10 miles of the **Daniel Inouye Highway**.



2000

SSFM adds **Traffic Engineering** services.

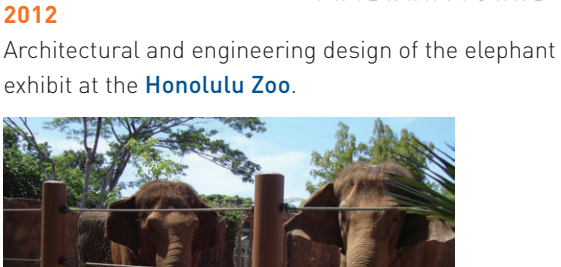


2002

Planning and design of the **Pearl Harbor Magnetic Silencing Facility** concrete slip.

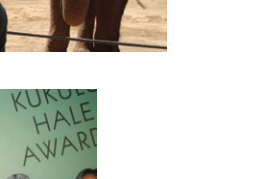
2003

SSFM moves to its **new headquarters**.



2009

New Logo SSFM International



2007

Shanghai office opens.

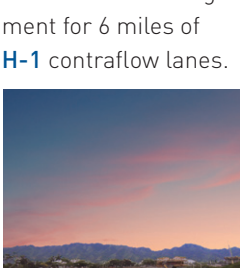


2012

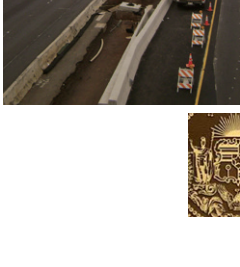
Architectural and engineering design of the elephant exhibit at the **Honolulu Zoo**.

2014

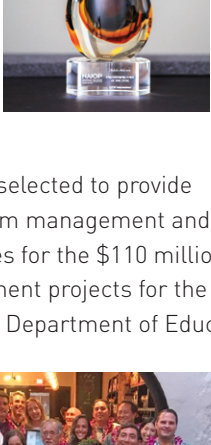
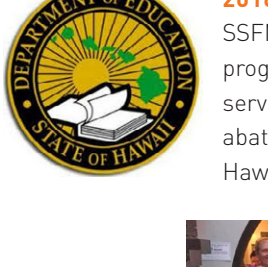
Kapolei office opens.



A **6.7 magnitude earthquake** on the Big Island.

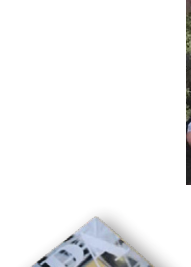


Construction management for 6 miles of **H-1** contraflow lanes.



2015

SSFM selected as the **NAIOP** Engineering Firm of the Year for its commitment and extensive contributions to shaping the face of Hawaii's real estate for over 5 decades.



2016

SSFM selected to provide program management and AE services for the \$110 million heat abatement projects for the Hawaii Department of Education.



December 2018

SSFM Wins 3 American Planning Association Hawaii Awards



April 2019 Kauai General Plan Update receives the APA Daniel Burnham award with SSFM as prime consultant.

